

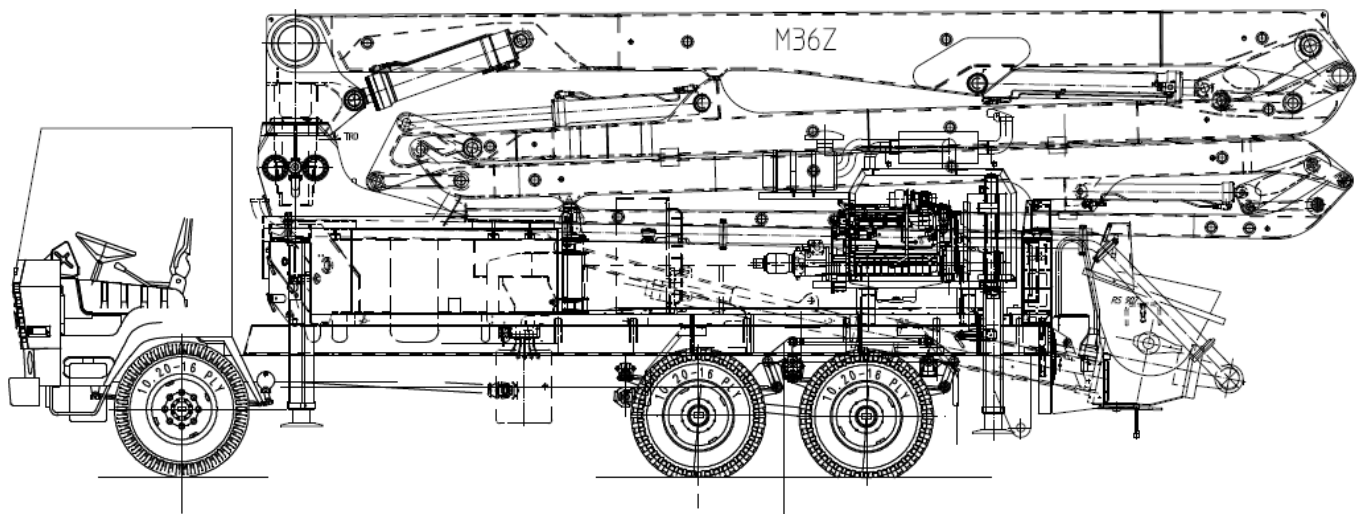
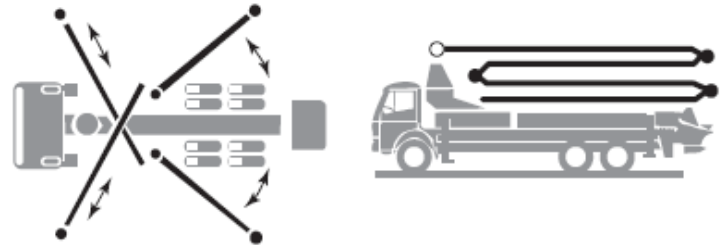
Truck – mounted Concrete pump

BSF 36.09 H

Max Theoretical:

Output up to 137 m³/ h

Delivery pressure up to 80 bar



All data maximum theoretical

Technical data for concrete pump

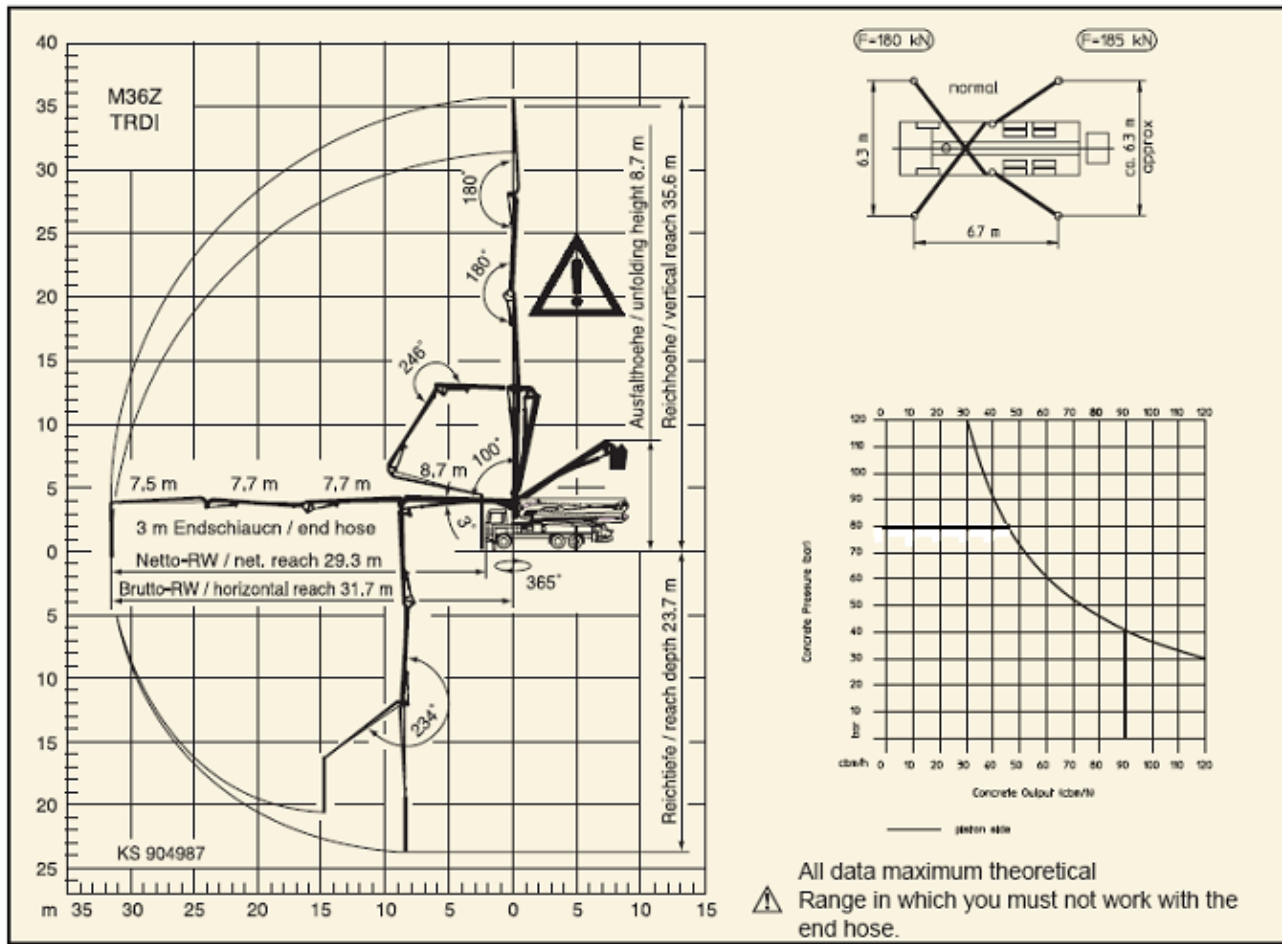
Technical data for boom

Model	BSF 36.09H
Output	137* / 92**m ³ / h
Delivery pressure	54* / 80** bar
Delivery cyl. fl	230 mm
Stroke of delivery cyl.	1400 mm
Strokes volume of delivery cyl.	116 L
Strokes / 100m ³	1724
Strokes / minute	39* / 26**
Hydraulic ratio	6.5* , 4.4**
Transfer tube	S transfer tube (S 2318N)
Hopper	RS 907 A Approx. 600L
Filling height	Approx. 1.35 m
Control system	Free flow hydraulics (FFH)

Model	Boom M36-4
Reach height	35.6 m
Horizontal reach	31.7 m
Reach depth max.	23.7 m
Max. support leg force	front : 18.0Mp / 180kn Rear : 18.5 Mp/185kn
Unfolding height	8.7 m
End hose length	3 m
Delivery line	DN 125, max. 85bar
Slewing circle	365°
Slewing speed	1 rotation in 160 sec.
Number of arms	4
Folding system	Z fold
Hydraulic control	Modul boom control (MBC)
Remote control	Cable remote control
Support	Front : Rear :
	Telescoping, diagonally Swinging

- **Slave engine:** Volvo penta, 155kW @ 2500 rpm
- Dimensions, weights and engine power depend on truck model.
- * Rod side, **Piston side

Reach information diagram, Support, Performance diagram



• Standard version

- Water tank volume approx. 300l
- Delivery cylinder Ø230mm
- RS 907A hopper with S2318N transfer tube
- Support plates 4x in magazine
- MBC
- Delivery line DN 125(5.5"), 133 x 4
- End hose 3.0m, DN 125(5.5")
- Cable remote control with 40m cable
- Tool box
- Spray hose 10m with nozzle
- Flushing water pump: 160L/min, 25 bar
- Painting: Arm assembly RAL 3020, signal red
- Painting: Pump MB 1227, chrome yellow
- Output regulator
- Central grease lubrication hand pump for hopper
- Rubber collar for hopper(S-Valve)
- Transfer TUBE S2318/90MM SHAFT
- Protection cover for plunger cylinder
- Agitator Safety switch off, electrical
- Cleaning port and catching basket
- Side deck (Aluminium)

Putzmeister Concrete Machines Pvt. Ltd.
 Plot No. N4, Phase IV,
 Verna industrial estate,
 Verna Salcete, Goa 403 722.

Tel : +91-832-6696-000
 Fax : +91-832-6696-300
 E-mail : info@pmw.co.in

For all your support needs, contact –

Sales – sales@pmw.co.in

Service – aps@pmw.co.in