



# FL958G

### Technical Features of FL958G:

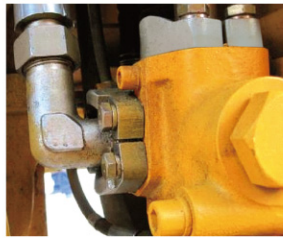
- Equipped with Weichai WD10G220E23 engine as standard configuration and with Shangchai-SC11CB220G2B1 engine as optional;
- Central articulated, the whole machine is of good stability;
- Adopted all-hydraulic flow priority to enlarge steering systems, light and flexible steering;
- Adopted a large vision, all closed damping luxurious cab with A/C and audio device, advanced damping seat, comfortable and safe operating environment;
- Equipped with cold start, central greasing , electronic weighing.



# Products Information



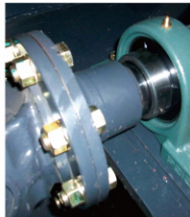
Side-open hood



Full Forged Integral Hydraulic Connector



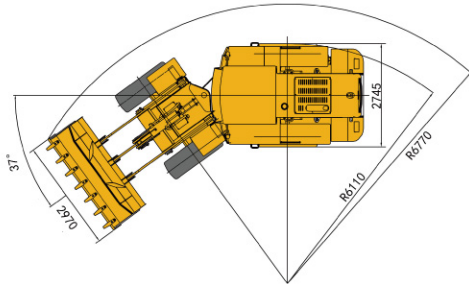
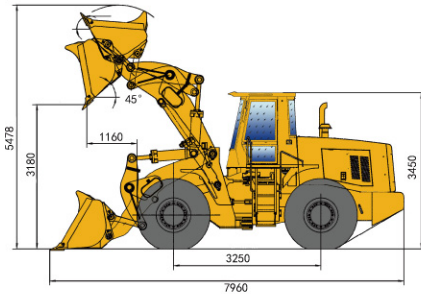
Wheel Rim Mounting Nuts



Imported bearing of transmission axle



24° cone seal pipe fitting



## Main parameters

Rated load	kg	5000
Operating weight (standard)	kg	17100
Rated bucket capacity	m <sup>3</sup>	3
Maximum breakout force	KN	185
Maximum traction force	KN	160
Total cycle time	s	10.6
Maximum dump height	mm	3180
Maximum dump distance	mm	1160
Forward speed range	km/h	0 ~ 38.4
Reverse speed range	km/h	0 ~ 24.2
Transport dimensions (L × W × H)	mm	7960×2970×3450
Maximum steering angle	°	37
Maximum gradeability	°	30
Minimum turning radius	mm	6770
Tire size	/	23.5-25-16PR

## Engine parameters

Model	/	Weichai WD10G220E21
Type	/	6-cylinder, in-line, direct injection and turbocharged
Power	kw	162
Maximum torque	N•m	860
Cylinder diameter	mm	126
Stroke	mm	130
Displacement	L	9.756
Fuel consumption	g/kw•h	225

## Hydraulic system

Work system pressure	Mpa	20
----------------------	-----	----

## Braking System

Running braking system type	/	Single pipe air- oil 4-wheel clipper disc braking
Parking / emergency brake system type	/	Drum braking

## Tank Capacity

Fuel tank	L	280
Hydraulic oil tank	L	210