

ZAXIS series

TATA HITACHI

Reliable solutions

ZAXIS370LCH

*Minimum Effort,
Maximum Efficiency*



HYDRAULIC EXCAVATOR

Rated Engine Power : 250 PS @ 2000 rpm
Operating Weight : 35400 kg
Bucket Capacity : 1.3 m³ - 2.1 m³

SPECIFICATIONS

ENGINE

Model.....Isuzu AA-6HK1X
 Type.....4-cycled water-cooled, direct injection
 Aspiration.....Turbo charged, intercooled
 No.of cylinders.....6
 Rated power
 DIN 6271, net.....H/P mode : 250PS @ 2000 rpm
 P mode : 240PS @ 1900 rpm
 Maximum torque.....873N-m @ 1700 rpm

HYDRAULIC SYSTEM

Main pumps.....2 variable displacement axial piston pumps
 Max. oil flow.....2 X 290 L/min
 Pilot pump.....1 gear pump
 Max. oil flow.....32 L/min.

SUPER STRUCTURE

Swing speed.....11.8 rpm

RELIEF VALVE SETTING

Implement circuit.....320 kgf/cm²
 Swing circuit.....320 kgf/cm²
 Travel circuit.....355 kgf/cm²
 Pilot circuit.....40 kgf/cm²
 Power boost.....350 kgf/cm²

UNDER CARRIAGE

Upper rollers.....2
 Lower rollers.....8
 Track shoes.....48
 Track guards.....3
 Travel speeds.....High: 0 to 5.5 km/h
 Low: 0 to 3.8 km/h
 Maximum traction force.....246 kN
 Gradeability.....35° (70% continuous)

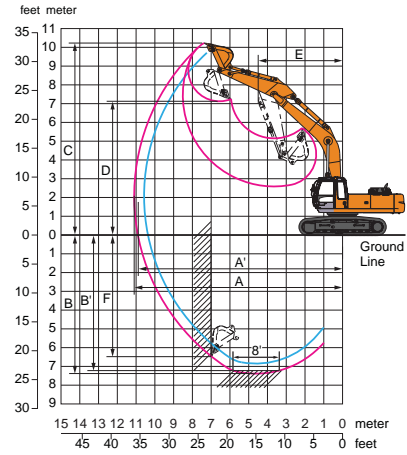
SERVICE REFILL CAPACITIES

Fuel tank.....560.0 ltr
 Engine coolant.....35.0 ltr
 Engine oil.....36.0 ltr
 Swing mechanism.....16.3 ltr
 Travel device (each side).....9.2 ltr
 Hydraulic system.....320.0 ltr
 Hydraulic tank.....154.0 ltr

BUCKETS

Capacity m ³	Width		No. of teeth	Weight kg
	Without side cutters mm	With side cutters mm		
1.3	1274	No side cutter	4	1482
1.5	1376	No side cutter	5	1498
1.7	1568	1658	5	1651
2.1	1570	1660	5	1846

WORKING RANGES

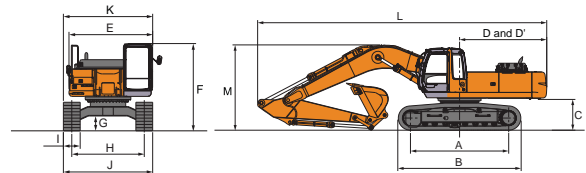


Unit: mm

Boom Length	6.4 m	
Arm length	2.33 m	2.66 m
A Max. digging reach	10 318	10 570
A' Max. digging reach (on ground)	10 102	10 370
B Max. digging depth	6 432	6 850
B' Max. digging depth (8' level)	6 238	6 650
C Max. cutting height	9 661	9 870
D Max. dumping height	6 792	6 830
E Min. swing radius	4 553	4 570
F Max. vertical wall	4 680	5 620
Bucket digging force*	24 200 kgf	24 200 kgf
Arm crowd force*	22 500 kgf	21 000 kgf

* As per ISO Standards

DIMENSION



Unit: mm

A	Distance between tumbles	4 050
B	Undercarriage length	4 950
*C	Counterweight clearance	1 160
D	Rear-end swing radius	3 320
D'	Rear-end length	3 310
E	Overall width of upperstructure	2 995
F	Overall height of cab	3 140
*G	Min. ground clearance	500
H	Track gauge	2 590
I	Track shoe width	G 600
J	Undercarriage width	3 190
K	Overall width	3 190
L	Overall length With 2.66 m arm	11 090
M	Overall height of boom With 2.66 m arm	3 470
N	Track height With triple grouser shoes	1 070

The Specifications are subject to change without prior notice. The Machine depicted may vary from the actual Machine Please contact our nearest office for latest specifications. Accessories shown here are not part of the standard equipment Performance of the machine may vary with site and operating conditions encountered

Tata Hitachi Construction Machinery Company Limited

Registered Office : Jubilee Building 45 Museum Road Bangalore 560 025 India
 Telephone: +91 80 66953301 02 03 04 05 Fax: +91 80 66953309 25325792

Toll Free: 1800 3456 500



Authorised Dealer