



# FL966F

## Technical Features of FL966F:

- Power configuration: Shanghai SC11CB2401G2B1 engine or Weichai engine;
- Transmission system is adopted split arrangement with easy repair and maintenance;
- Adopted full-hydraulic flow priority to enlarge steering system, light and flexible steering;
- Adopted a large vision, all closed damping cab, comfortable and safe operating environment.



# Products Information



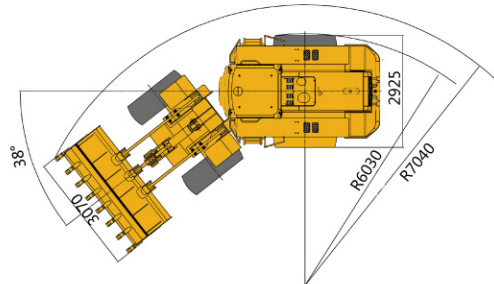
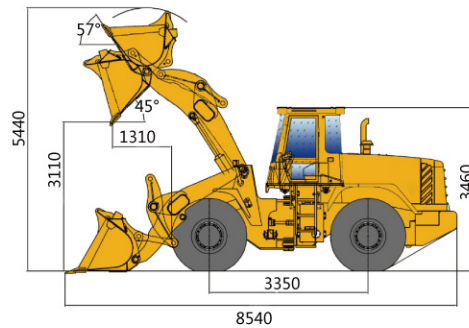
Pilot Control



Good Radiation Capacity of Hood



Broader Driving Space



## Main parameters

Rated load	kg	6000
Operating weight (standard)	kg	20000
Rated bucket capacity	m <sup>3</sup>	3.5
Maximum breakout force	KN	≥200
Maximum traction force	KN	≥165
Total cycle time	s	≤10.5
Maximum dump height	mm	3110
Maximum dump distance	mm	1310
Forward speed range	km/h	0~37
Reverse speed range	km/h	0~23.5
Transport dimensions (L × W × H)	mm	8540×3030×3460
Maximum steering angle	°	38
Maximum gradeability	°	29
Minimum turning radius	mm	7040
Tire size	/	23.5-25

## Engine parameters

Model	/	Weichai WD10G240E21/Shangchai SC11CB240.1G2B1
Type	/	6-cylinder, in-line, direct injection and turbocharged
Power	kw	175
Maximum torque	N•m	920/912
Cylinder diameter	mm	126/121
Stroke	mm	130/152
Displacement	L	9.726/10.45
Fuel consumption	g/kw•h	240

## Hydraulic system

Work system pressure	Mpa	18
----------------------	-----	----

## Braking System

Running braking system type	/	Single line gas cap oil 4-wheel clipper disc braking
Parking / emergency brake system type	/	Flexible shaft manual type

## Tank Capacity

Fuel tank	L	320
Hydraulic oil tank	L	250